

Planning for a Senior Apartment Building at St Patrick's Home of Ottawa

June 2021

For the past few years, the Board of Directors of St. Patrick's has been exploring how to expand services to provide much needed services to seniors which would include a wider community focus and a continuum of care meeting a variety of needs. Supporting people to remain in the community for as long as possible is a priority.

The Vision is for the development of the site at 2865 Riverside Drive, next to the St. Patrick's Home, to serve the most vulnerable seniors in the community with appropriate and affordable housing in a welcoming supportive community, where everyone feels supported and cared for.

At the June 2021 meeting, the Board of Directors passed a motion to proceed with further development of plans for an independent, affordable living apartment building, with between 113 and 133 units. The apartments are aimed at both independent seniors and those who need support to continue to live in the community. Any services available in their home can be provided in these apartments, as well as additional services should their needs change.

The new apartment building will be specially designed for accessibility and comfort. The design includes lounge/reception areas in the building for meal service, leisure and learning activities as well as social and community events. There will be on site amenities and services to allow for a co-ordinated continuum of care for seniors, easing the transitioning within the health care system, while they remain in their own home.

Part of the plans include 'Urban Cottages', in addition to regular one- and two-bedroom apartments, in the building. Each of the 'Urban Cottages' will include a grouping of 10 studio apartments sharing a common kitchen, dining and living areas. Meal preparation, support for personal care, housekeeping and laundry will be provided.

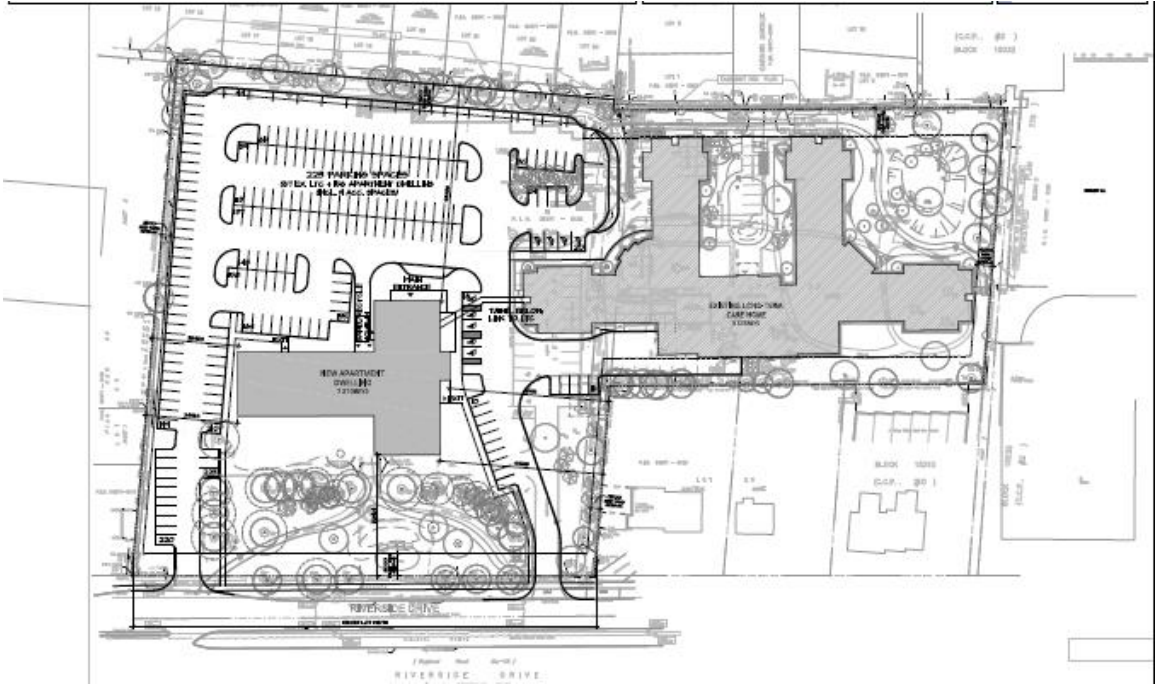
To enable seniors throughout the apartment building to receive the community support and healthcare services required as their needs change, there are currently discussions being held with publicly funded healthcare programs to provide these services in a Neighbourhood Integrated Care Model. In this model St. Patrick's Home would co-ordinate and provide homecare in the apartments for all tenants who meet the criteria for care programs. To maintain the apartment building there will also be roles for St Patrick's staff in the areas of maintenance, cleaning and meal preparation.

The City of Ottawa and Canada Mortgage and Housing Corporation are financially supporting the planning costs of this project to date. No provincial long term care funding is being used for

this planning. Future development of this project must be supported by additional funding being available.

The draft site plan has the apartment building in a location on the property which allows maintaining the green spaces, trees and walkways. The placement of the apartment building includes consideration of our community neighbours. Parking will increase by 120 parking spots, which will be shared between the apartment buildings and the current St. Patrick’s Home of Ottawa.

The draft site plan is included for your information.



The site is zoned for a 4-storey building; however, the current planning process is looking at a 6-7 storey building. The zoning application for the apartment building has been submitted for approval by the Planning Committee of the City of Ottawa for up to a 7-storey building.

Input, comments, questions and suggestions are all encouraged. Please feel free to contact Janet Morris, President and CEO if you have any comment, questions or suggestions.